

Coyote Lake Lodge – A Project of Alberta Abilities Lodges Society

- Accommodation Services: Dated January 1, 2020 -

Introduction: Our goal is to provide an accessible, low environmental footprint, wildland lodge where all guests can experience the healing power of the outdoors by being immersed in nature. We operate 365 days of the year. We celebrate the Canadian diversity of human spirit and ingenuity with celebrations and events. With an inclusive guest policy, we do not display religious or political symbolism on the property. Coyote Lake Lodge is not a traditional camp or hotel. We ask guests to respect nature and leave only tracks. Guests are expected to respect other guests, volunteers, and facilities. Guests will be required to sign a waiver, provide a damage deposit, will be checked in and out of accommodation, and will be responsible for clean-up. All solid waste and items for recycling will be carried back to your home for disposal.

Alberta Abilities Lodges Society is a young, registered charity (# 844248617RR0001) that operates completely with volunteers on private donations. Coyote Lake Lodge is owned and operated by our society. We want to make your visit a positive experience to remember. Our society received Certificates of Title to the property on October 13, 2015. Since then, we have been renovating our accommodations for safety, security, and accessibility. We hope that our guests recognize the fees are an investment in providing increasing quality of service to those who will benefit from nature and organized events. A portion of fees will be added to our endowment fund that supports travel to the lodge for groups with limited resources.

Registration and Payment: Accommodation availability is on a first come, first served basis. Guests are encouraged to book weeks in advance of arrival. A non-refundable payment of 50% of the expected accommodation fee is required to secure the reservation. Children under two years of age are free. There is no reduced rate for children older than two years of age. Make cheques payable to “Alberta Abilities Lodges Society” and mail to AALS, PO Box 4455, Edmonton, Alberta T6E 4T5.

Rental of the Complete Lodge: Contact us for daily group rates because we welcome family celebrations, retreats, and business meetings.

Day Use of Coyote Lodge (9:00AM to 4:30PM) by Individuals and Groups:



(Left to right: images of Coyote Lodge showing deck, dining room, kitchen)

Guests are welcome to use the lodge washrooms, library, meeting room, dining room, and deck, as well as the fire pit, and trails. Four Coyote Lodge entrances are ground/deck level. The deck reaches around three sides of the dining room from the parking lot to the dining room door and to the south entrance. A concrete walkway continues around to the parking lot. We have three fully accessible washrooms equipped with ceiling fans and lights, emergency lights, a toilet with drop-down bars, a vanity with tilt mirror, and hand driers. The largest washroom has a wheel-in shower. Washroom doors are 36” wide.

Bring your food and beverages unless special arrangements are made. Amenities at your disposal in the lodge include the dining room (600 ft² or 55 m² - 40 person capacity), deck over-looking Coyote Creek Valley (1200 ft² or 110 m² - 70 person capacity), kitchen (414 ft² or 55 m²), meeting room (210 ft² or 19.8 m²) with 1,000 DVDs, and library (238 ft² or 22.4 m²) with 1,000 books. Outdoors are trails to hike, wildlife to photograph, and silence to be valued.

Cost = \$25.00 per person per day.

Overnight Accommodation in Personal Vans and Tent Campers: Guests are welcome to park on our limited-space parking lot (with six electrical outlets) until our RV campground is constructed. Guests may be independent or part of a group that is renting a cabin. Since these guests are self-contained, they are treated as day visitors.

Cost = \$25.00 per person per day and night.

Overnight Accommodation in Coyote Lodge: (Three bedrooms each with two beds; Cost including GST = \$50 per bedroom per day):



(Left to Right: Washroom with wheel-in shower, Bedroom # 2, Bedroom # 3)

These three bedrooms are available for able-bodied persons if they are not reserved for persons with severe disabilities. Guests provide personal toiletries, towels, bedding (including pillowcase and blankets or sleeping bag), and food. Food preparation and serving is organized by individuals, families, and group leaders in the commercial kitchen and dining room. At present the bedrooms are accessed through 32” or 81 cm doors.

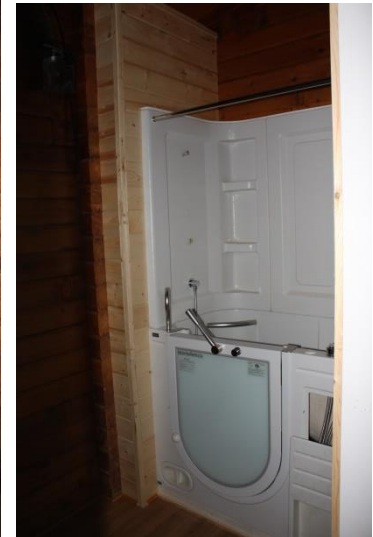
Bedroom #1 at 116 ft² (10.8 m²) has carpeted floor with one captain's bed with two drawers and one 3/4 bed, a chest of drawers, one night table, and floor to ceiling pole.

Bedroom #2 at 103 ft² (9.6 m²) has carpeted floor with one captain and one ¾ bed, a four-drawer chest of drawers, and a floor to ceiling pole.

Bedroom #3 at 143 ft² (13.3 m²) has carpeted floor with one maple frame single bed and one double bed, bedside table and light, chest of four drawers with light, and a floor to ceiling pole.

There are three accessible washrooms that serve visitors to the lodge. Washrooms have toilets with wall bars, sinks with tilt mirrors, electric hand driers, and emergency lights. The largest washroom has a wheel-in shower.

Overnight Accommodation in Cabins: The cabins are 900 ft² or 83.6 m² in size with an attached deck. Cabins are rented as house-keeping style where guests provide personal toiletries, bedding (including pillow case and blankets or sleeping bag), and food. Guests are also responsible for clean-up. Mini-kitchens have dishes and cutlery for six persons, apartment size refrigerator, microwave oven, coffee maker, kettle, and toaster.



(Left to Right: Renovated Cabin 1 with ramp from sidewalk to floor level access, wide hallway, mini-kitchen). Note that Cabin 2 has a step-in tub/shower while Cabin 1 has a wheel-in shower.

Cabin #1 and #2 (five or six beds): These cabins were renovated in late 2018 and early 2019. Both cabins have a wrap-around deck with a view of Coyote Creek valley. The two bedrooms have one captain's bed with two drawers each and one double bed. A sitting room has a captain's bed and a sofa with a view of the valley. The living area has dining table & four chairs, upholstered sofa & chair, two end-tables with lights, and one floor lamp. A mini-kitchen has a window that looks out over Coyote Valley and has a sink, microwave, and the usually small food preparation and serving dishes. The accessible washrooms have a sink with tilt mirror, a toilet with two drop-down arm rests. Cabin 1 has a wheel-in shower and Cabin 2 has a step-in bath. **Cost including GST = \$125 per night for 1 to 4 persons. Cost for each additional person per night = \$25.00. Children under two years of age are free. There is no reduced rate for children older than two years of age.**



(Left to Right: Cabin #3 has 5 steps to deck and two internal steps, bedroom, living room)

Cabin #3 (six beds) has five steps to the deck and three steps from the foyer to the main floor. The larger bedroom has two captain's beds with two drawers each and one double bed. The smaller bedroom has two captain's beds. The living room has a dining table with hanging light & four chairs, one 6-pillow sofa, a leather Lazy boy chair, a bookcase, two end tables. There are two small washrooms, one with a sink and toilet, one with tub/shower and sink. **Cost including GST = \$75 per night for 1 to 4 persons. Cost for each additional person per night = \$25.00. Children under two years of age are free. There is no reduced rate for children older than two years of age.**

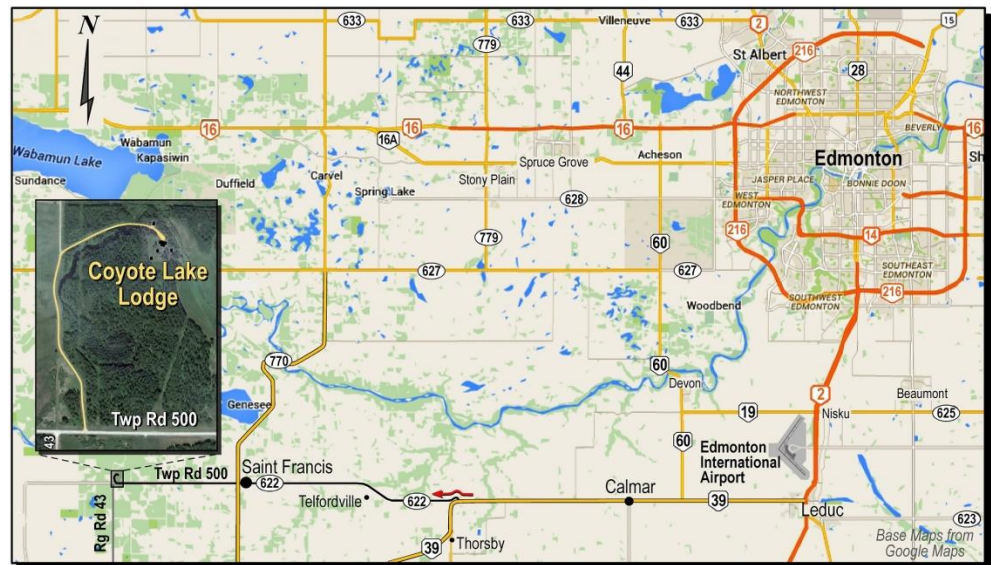


(Cabin #4 Left to Right: 7 steps to deck, living room, bedroom #3 with bathroom, kitchenette)

Cabin #4 (five beds) has seven steps to the deck and three steps from the foyer to the main floor. Bedrooms are carpeted. The largest bedroom has a queen size bed, night table, lamp, and chest of drawers. The second bedroom has one 3/4 bed, one night table and lamp, chest of drawers. A washroom with a toilet, sink and tub/shower serves these two bedrooms. The third bedroom has a double bed, a night table and lamp, a chest of drawers, and an attached washroom with a toilet, sink, and tub/shower. There is a mini kitchen with a regular size refrigerator and electric stove, sink, and cupboards with the same cutlery as in the other cabins. Beside the kitchen is a breakfast nook with a table and two chairs. In the living room there is another small table with two chairs, upholstered sofa & coffee table, two end tables with matching lamps, and an upholstered rocking chair. **Cost including GST = \$75 per night for 1 to 4 persons. Cost for each additional person per night = \$25.00. Children under two years of age are free. There is no reduced rate for children older than two years of age.**

Need more information?

Contact Eleanor Wein: eleanorwein@shaw.ca, 780-436-0141(home)



Lodge Address: 50033 Range Road 43 (North) 53° 17' 08" North, 114° 30' 29" West

NOTES